

2015

CF Patient Registry
Center Specific Report

FULL REPORT Excerpt

Stanford University Medical
Center

Programs 166 & 205

Median FEV1 Percent Predicted for Patients 18 to 29 Years

Stanford University Medical Center, 2015

81.3

Care Center Network - Median of All Center Values, 2015

72.8

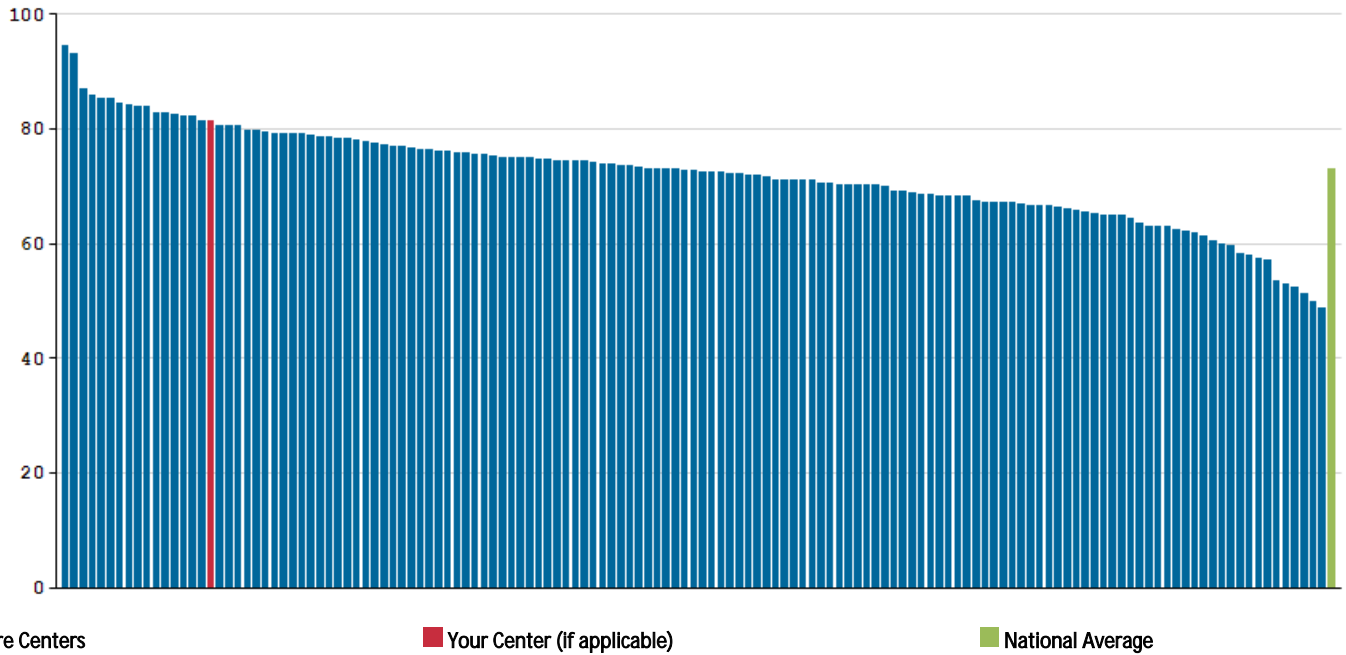
Care Center Network - Average of Top 10 Center Values, 2015

85.6

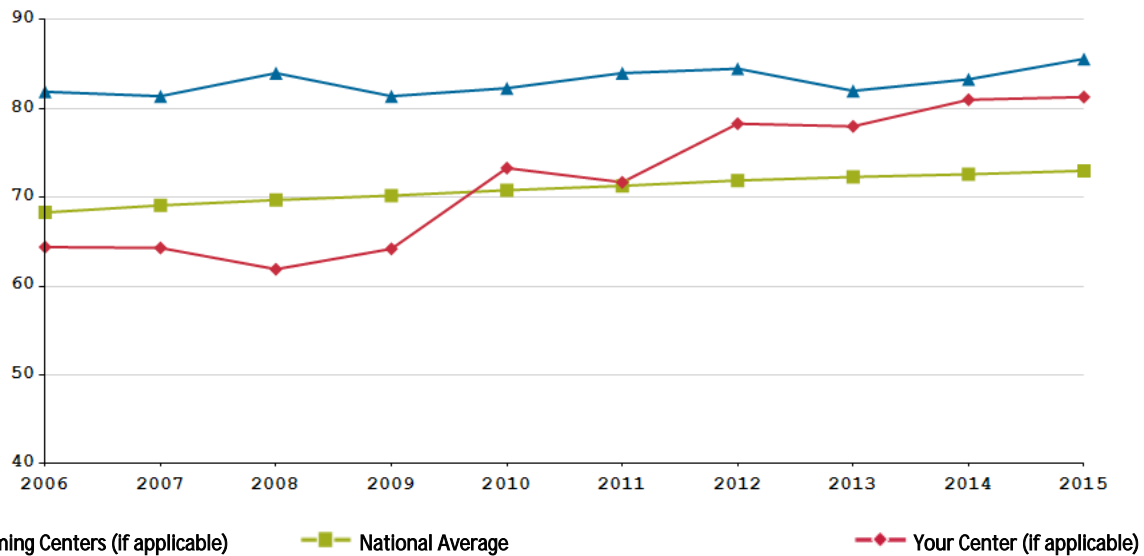
National Average of All Patients, 2015

73.0

Median FEV1 Percent Predicted for Patients 18 to 29 Years in 2015 ,by Center



Median FEV1 Percent Predicted for Patients 18 to 29 Years, 2006-2015



| | 2006 | 2007 | 2008 | 2009 | 2010 | 2011 | 2012 | 2013 | 2014 | 2015 |
|-----------------------------|------|------|------|------|------|------|------|------|------|------|
| Your Center | 64.4 | 64.3 | 61.9 | 64.2 | 73.3 | 71.7 | 78.3 | 78.0 | 81.0 | 81.3 |
| National Average | 68.3 | 69.1 | 69.7 | 70.2 | 70.8 | 71.3 | 71.9 | 72.3 | 72.6 | 73.0 |
| Ten Best Performing Centers | 81.9 | 81.4 | 84.0 | 81.4 | 82.3 | 84.0 | 84.5 | 82.0 | 83.3 | 85.6 |

Median FVC-FEV1 Ratio Percent Predicted for Patients 18 Years and Older

Stanford University Medical Center, 2015

85.8

Care Center Network - Median of All Center Values, 2015

82.7

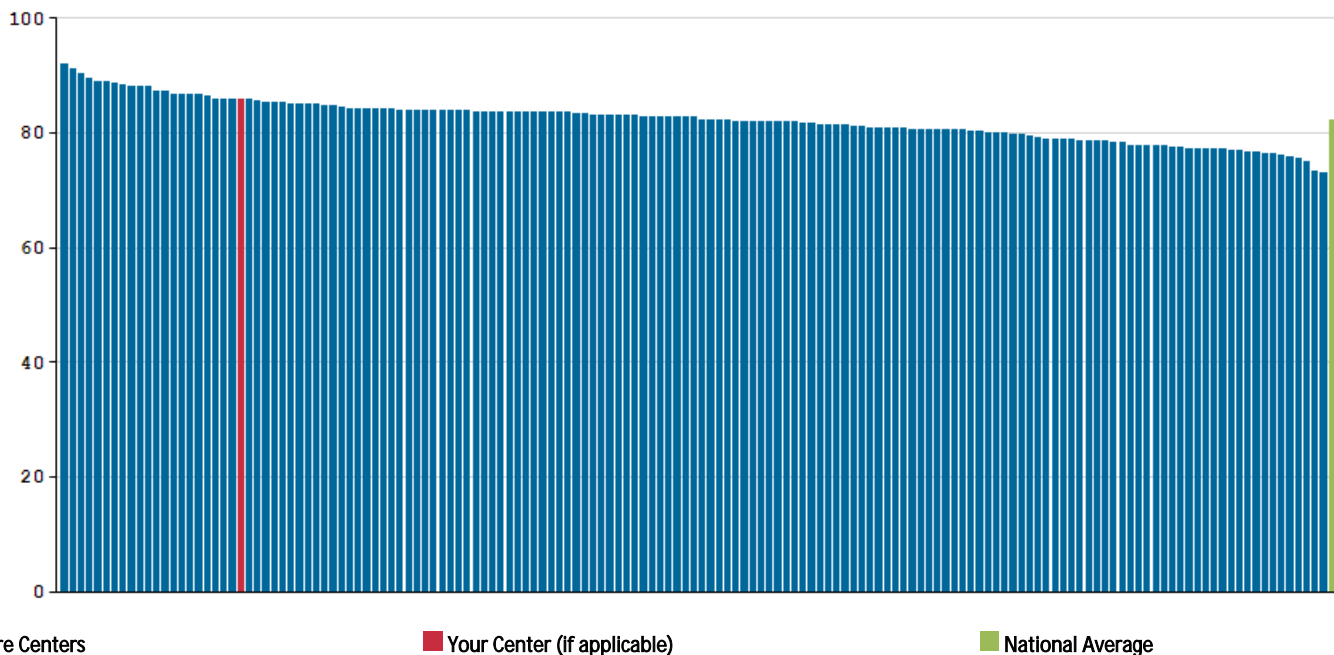
Care Center Network - Average of Top 10 Center Values, 2015

89.5

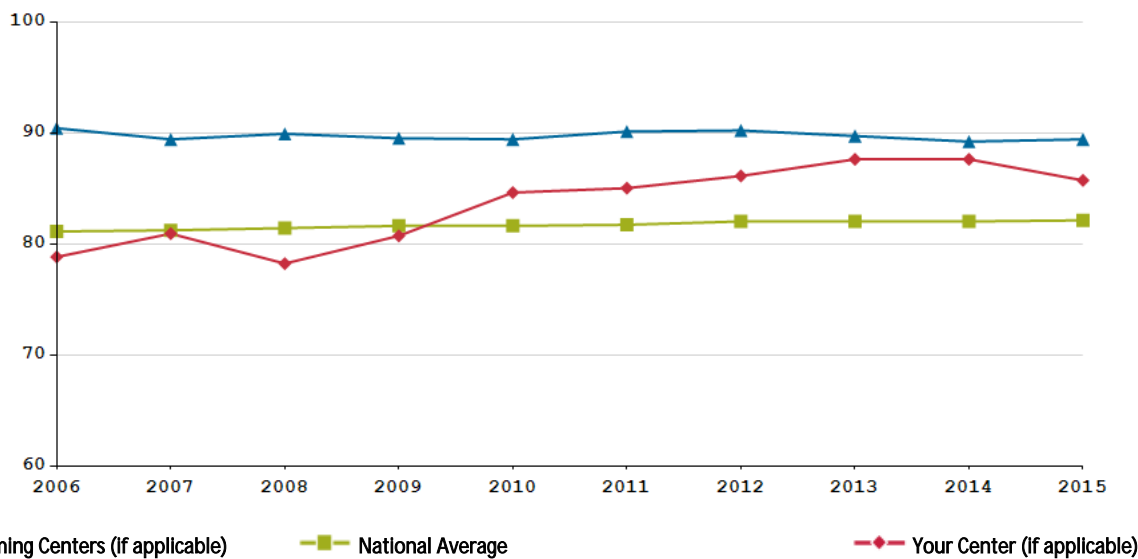
National Average of All Patients, 2015

82.2

Median FVC-FEV1 Ratio Percent Predicted for Patients 18 Years and Older in 2015 ,by Center



Median FVC-FEV1 Ratio Percent Predicted for Patients 18 Years and Older,2006-2015



| | 2006 | 2007 | 2008 | 2009 | 2010 | 2011 | 2012 | 2013 | 2014 | 2015 |
|-----------------------------|------|------|------|------|------|------|------|------|------|------|
| Your Center | 78.9 | 81.0 | 78.3 | 80.8 | 84.7 | 85.1 | 86.2 | 87.7 | 87.7 | 85.8 |
| National Average | 81.2 | 81.3 | 81.5 | 81.7 | 81.7 | 81.8 | 82.1 | 82.1 | 82.1 | 82.2 |
| Ten Best Performing Centers | 90.5 | 89.5 | 90.0 | 89.6 | 89.5 | 90.2 | 90.3 | 89.8 | 89.3 | 89.5 |

Patients 18 Years and Older with 4 Visits, 4 Cultures, 2 PFTs

Stanford University Medical Center, 2015

60.6

Care Center Network - Median of All Center Values, 2015

40.0

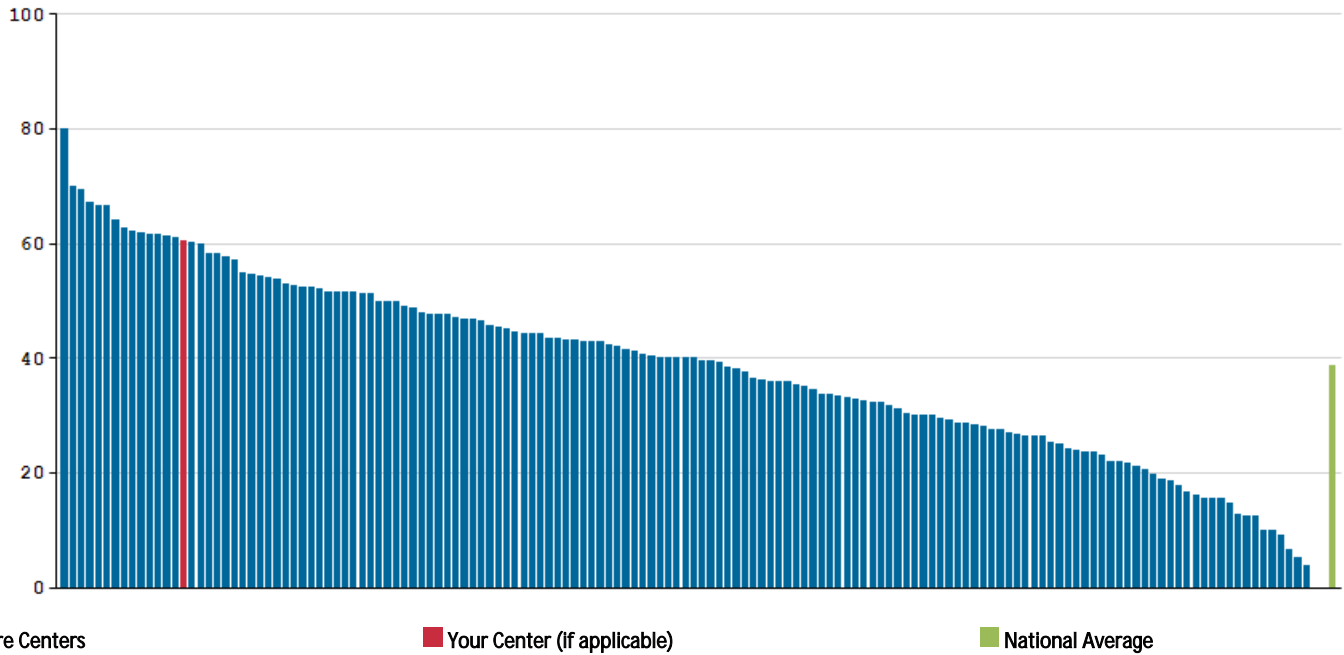
Care Center Network - Average of Top 10 Center Values, 2015

64.8

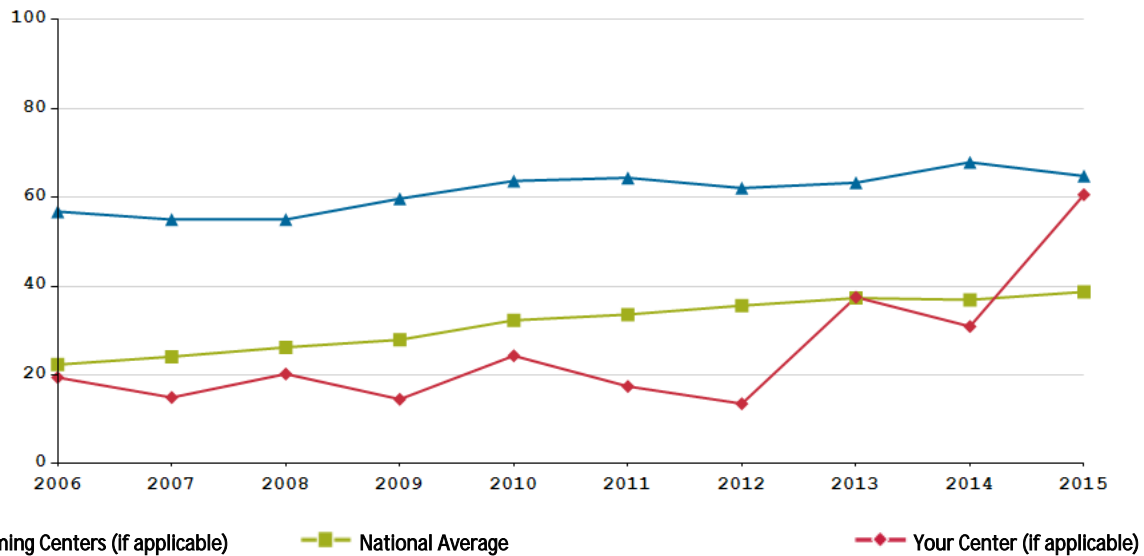
National Average of All Patients, 2015

38.7

Patients 18 Years and Older with 4 Visits, 4 Cultures, 2 PFTs in 2015 ,by Center



Patients 18 Years and Older with 4 Visits, 4 Cultures, 2 PFTs, 2006-2015



| | 2006 | 2007 | 2008 | 2009 | 2010 | 2011 | 2012 | 2013 | 2014 | 2015 |
|-----------------------------|------|------|------|------|------|------|------|------|------|------|
| Your Center | 19.4 | 14.9 | 20.2 | 14.5 | 24.3 | 17.4 | 13.5 | 37.5 | 30.9 | 60.6 |
| National Average | 22.3 | 24.1 | 26.2 | 27.9 | 32.3 | 33.6 | 35.6 | 37.3 | 36.9 | 38.7 |
| Ten Best Performing Centers | 56.8 | 55.0 | 55.0 | 59.7 | 63.7 | 64.4 | 62.1 | 63.3 | 67.9 | 64.8 |

Patients 18 Years and Older with 4 Visits, 1 Culture, 2 PFTs

Stanford University Medical Center, 2015

80.6

Care Center Network - Median of All Center Values, 2015

53.8

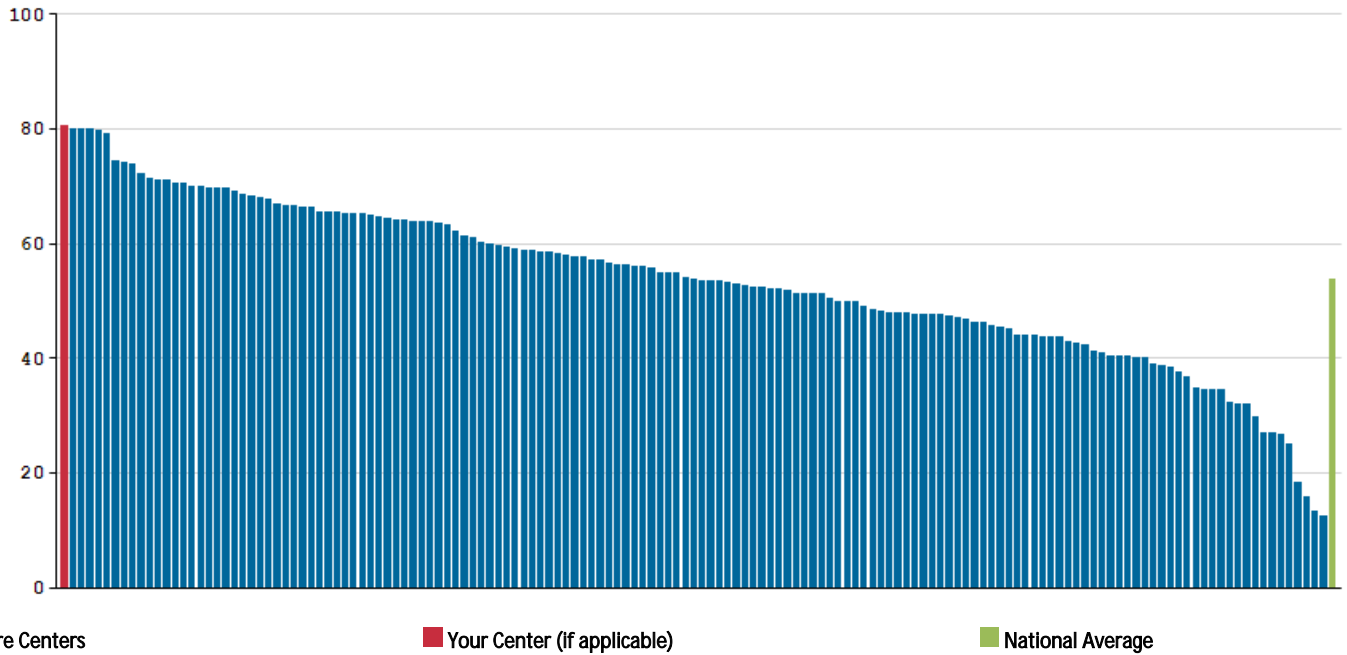
Care Center Network - Average of Top 10 Center Values, 2015

77.4

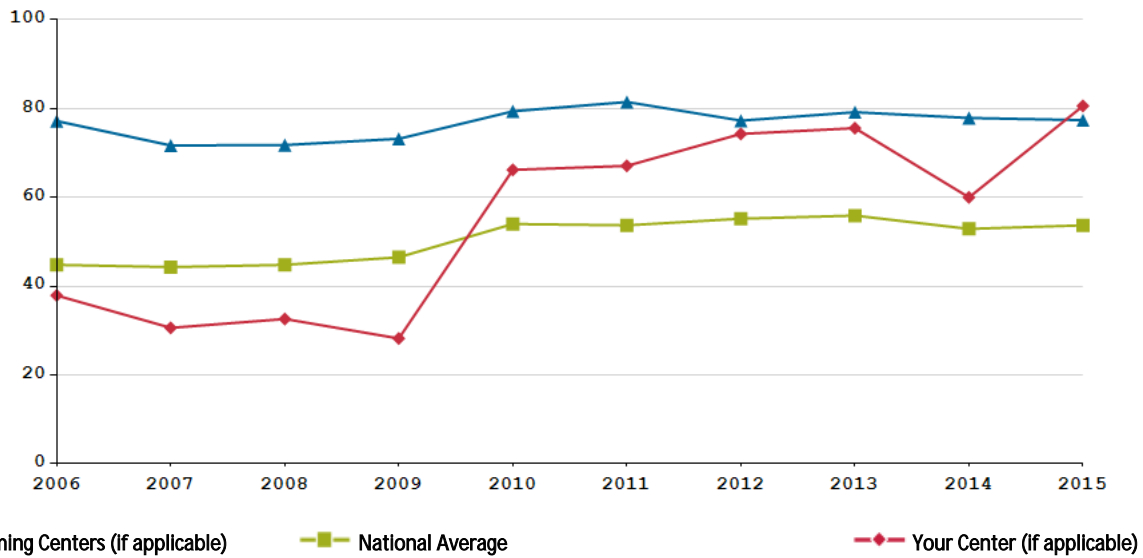
National Average of All Patients, 2015

53.7

Patients 18 Years and Older with 4 Visits, 1 Culture, 2 PFTs in 2015 ,by Center



Patients 18 Years and Older with 4 Visits, 1 Culture, 2 PFTs, 2006-2015



| | 2006 | 2007 | 2008 | 2009 | 2010 | 2011 | 2012 | 2013 | 2014 | 2015 |
|-----------------------------|------|------|------|------|------|------|------|------|------|------|
| Your Center | 37.9 | 30.6 | 32.6 | 28.2 | 66.2 | 67.1 | 74.3 | 75.6 | 60.0 | 80.6 |
| National Average | 44.8 | 44.3 | 44.8 | 46.5 | 54.0 | 53.7 | 55.2 | 55.9 | 52.9 | 53.7 |
| Ten Best Performing Centers | 77.2 | 71.7 | 71.8 | 73.2 | 79.4 | 81.5 | 77.3 | 79.2 | 77.9 | 77.4 |